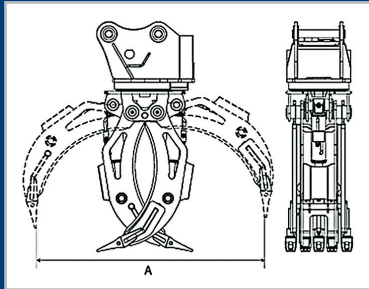


Rock Grabs

Macworks Rock Grabs for soil loosening, clearing debris, loading and unloading. Made from NM400 wear resistant steel, Pins are 42CrMo incorporating an oil gallery for lubrication. Can be used vertical with 360-degree rotation. Teeth are manganese for durability.



Rock Grab Attachment Specifications

Item	Unit	JS40A	JS60A	JS60AP	JS150A	JS150AP	JS220A	JS220AP	JS300A
Suitable Carrier	ton	4-5	6-9	6-9	9-16	12-18	18-26	20-28	28-35
Weight	kg	320	435	510	950	1200	1800	2300	2130
Opening A	mm	1060	1400	1400	1600	1600	2100	2100	2500
Working Pressure	bar	110-140	200-240	200-240	200-260	200-260	240-280	240-280	260-300
Working Flow	lpm	30-55	100	100	160	160	200-250	200-250	220-280
Rotation Diameter	mm	360	360	360	593	593	752	752	752



0800 MACWORKS

sales@macworks.nz

www.macworks.nz



MACWORKS
DRILLING AND MACHINE ATTACHMENTS

Grab Buckets

Grab Bucket Attachment Specifications

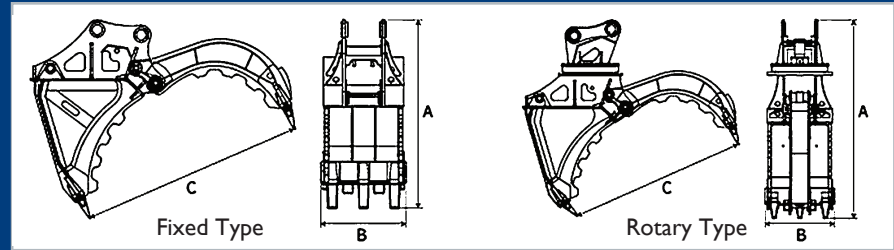


Item/Model	Unit	JSCB20	JSCB40	JSCB40R	JSCB80	JSCB80R	JSCB150	JSCB150R	JSCB200	JSCB200R	JSCB300	JSCB300R
Suitable Excavator	Ton	2-3	3-5	3-5	6-9	6-9	12-18	12-18	20-30	20-30	30-40	30-40
Weight	kg	167	350	470	580	690	820	950	1400	1770	1630	1930
Height A	mm	880	1150	1300	1300	1630	1750	2100	2000	2410	2250	2940
Width B	mm	330	430	430	600	600	690	690	850	850	980	980
Opening C	mm	820	1180	1180	1380	1380	1550	1550	2200	2200	2670	2670
Working Pressure	bar	130	140	180	150	180	220	250	250	280	280	280
Working Flow	lpm	40	50	60	80	100	160	160	220	220	220	220
Tine Width	mm	290	350	350	485	485	560	560	710	710	855	855
Rotation Diameter	mm	-	-	360	-	360	-	593	-	752	-	752

Macworks grab buckets primary use is demolition work. These are a great bucket, they are used for moving rock, digging out roots or demolition buckets. The arm also retracts so you can use them for digging.

Main features:

- Made of Q355B manganese steel plate for high strength and corrosion resistance.
- Units to suit machines 1 - 40ton.



Note: R suffix = Hydraulic Rotary Type



0800 MACWORKS

sales@macworks.nz

www.macworks.nz

Log Grabs

Log Grab Attachment Specifications

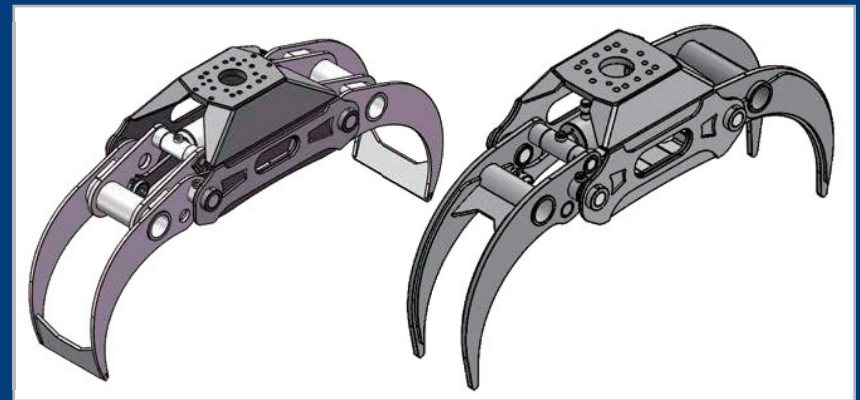
Macworks log grabs have fixed tynes so they won't bite into the wood for faster bundling and higher productivity.

Main features:

- 360 degree rotation system.
- HARDOX NM400 material for longer life.
- Wider opening size from 1000-2000mm.
- Parker hydraulic motor.
- Light weight with powerful grabbing force.



Model	Unit	RLG1000	RLG1200	RLG1400	RLG1700	RLG2000
Carrier Weight	T	1-3	1-5	5-7	12-16	17-24
Cylinder Pressure	Bar	250	250	250	250	250
Cylinder Oil Flow	L/min	12~20	17~30	23~45	33~65	50~90
Rotation Pressure	Bar	250	250	250	250	250
Rotation Oil Flow	L/min	4~6	4~6	6~8	9~13	12~18
Weight	Kg	69	82	139	260	365
Cylinder clamping power	Kn	80	105	105	155	155
Jaw opening	mm	1000	1200	1400	1700	2000



Macworks Log Grab motors match most excavator platforms. The cylinder safety check valve prevents grab release in an emergency and HARDOX NM400 steel plate ensures world class grapple wear resistance and durability.



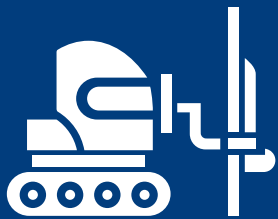
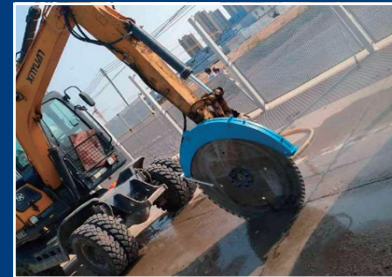
0800 MACWORKS

sales@macworks.nz

www.macworks.nz



MACWORKS
DRILLING AND MACHINE ATTACHMENTS



MACWORKS

DRILLING AND MACHINE ATTACHMENTS

0800 MACWORKS
0800 622 96757

sales@macworks.nz

www.macworks.nz

While efforts have been made to ensure accuracy, Macworks is not bound by accidental misdescriptions within this catalogue. Specifications are defined by core technical intent, not by typographical inconsistencies. If you have any questions, feel free to speak with a Macworks representative.