

Drum Cutters

Model	Excavator	Max Power	Max Flow	Recommended Flow	Pressure	Output Torque	Output Shaft Speed	Weight	Cutter Bit
YF - 05RW	2.5-6 ton	22 kW	65 lpm	40-60 lpm	≤400 bar	1875Nm@320bar	100rpm@50Lpm	215 kg	56 pcs
YF - 10RW	8-16 ton	45 kW	112 lpm	60-100 lpm	≤400 bar	3570Nm@320bar	90rpm@80Lpm	275 kg	56 pcs
YF - 15RW	12-18 ton	70 kW	132 lpm	100-150 lpm	≤400 bar	6320Nm@320bar	85rpm@120Lpm	595 kg	64 pcs
YF - 20RW	18-30 ton	90 kW	320 lpm	150-250 lpm	≤450 bar	17840Nm@320bar	78rpm@220Lpm	1370 kg	80 pcs
YF - 30RW	25-40 ton	110 kW	460 lpm	250-400 lpm	≤450 bar	21376Nm@320bar	76rpm@320Lpm	1400 kg	64 pcs
YF - 40RW	45-60 ton	140 kW	700 lpm	400-600 lpm	≤450 bar	33450Nm@320bar	60rpm@500Lpm	2100 kg	64 pcs

Please note the maximum flow and pressure can not be met at the same time - please consult Macworks before use.



Traverse Drum Cutters

Macworks drum cutters will remove material from rock or concrete surfaces with low noise and less vibration. High torque hydraulic motors and optimised pick pattern increase productivity. Extremely robust and low maintenance due to a massive drive shaft bearing and heavy duty seals. Easy exchange of wear parts.



MACWORKS
DRILLING AND MACHINE ATTACHMENTS

0800 MACWORKS

sales@macworks.nz

www.macworks.nz

Drum Cutters

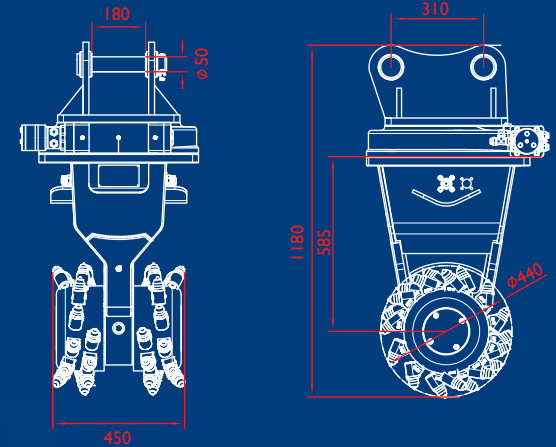
Model	Excavator	Max Power	Max Flow	Recommended Flow	Pressure	Output Torque	Output Shaft Speed	Weight	Cutter Bit
YF - 20TR	18-30 ton	90 kW	320 lpm	200-320 lpm	≤450 bar	17840Nm@320bar	78rpm@320Lpm	1400 kg	92 pcs
YF - 30TR	25-40 ton	110 kW	460 lpm	320-460 lpm	≤450 bar	21376Nm@320bar	76rpm@100Lpm	1752 kg	64 pcs

Please note the maximum flow and pressure can not be met at the same time - please consult Macworks before use.



360-degree Rotational Drum Cutters

Macworks 360° rotational drum cutters are ideal for tunnelling, trenching and profiling applications. All rotation units have a hydraulic swivel joint as standard allowing endless rotation.



Tunneling



Utility Work



Roadworks



Mining



Excavation



Structure Shaping



MACWORKS
DRILLING AND MACHINE ATTACHMENTS

0800 MACWORKS

sales@macworks.nz

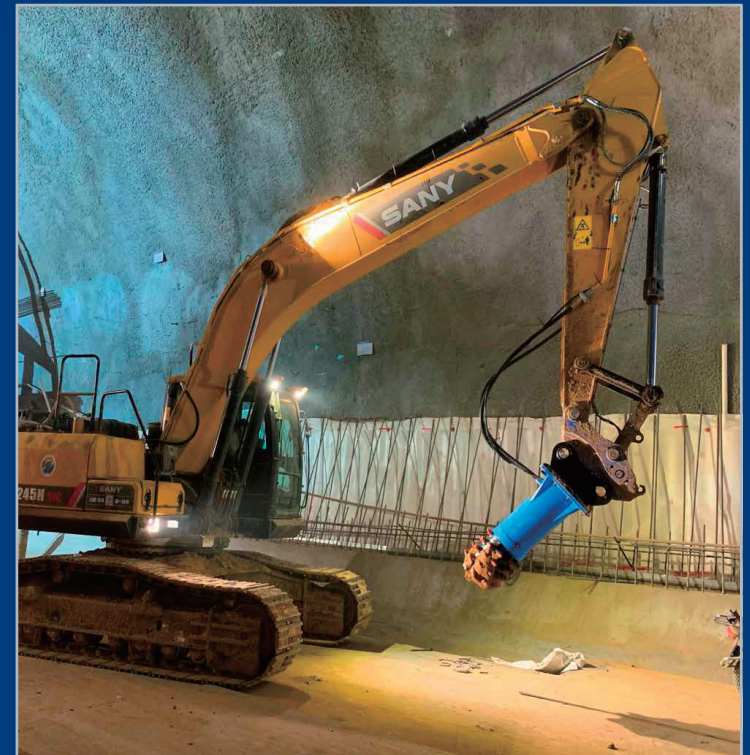
www.macworks.nz

Axial Drum Cutters



Model	Excavator	Max Power	Max Flow	Recommended Flow	Pressure	Output Torque	Output Shaft Speed	Weight	Cutter Bit
YD - 05RD	2.5-6 ton	25 kW	85 LPM	40-70 LPM	≤205 bar	2200Nm@320bar	100 RPM@50LPM	210 kgs	28 pcs
YD - 10RD	8-15 ton	50 kW	150 LPM	100-150 LPM	≤270 bar	6500Nm@320bar	95 RPM@100LPM	450 kgs	40 pcs
YD - 20RD	18-30 ton	95 kW	250 LPM	120-220 LPM	≤320 bar	14500Nm@320bar	95 RPM@200LPM	950 kgs	50 pcs
YD - 30RD	30-50 ton	250 kW	375 LPM	200-350 LPM	≤400 bar	22680Nm@315bar	83 RPM@375LPM	1484 kgs	45 pcs

Please note the maximum flow and pressure can not be met at the same time - please consult Macworks before use.



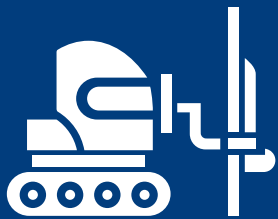
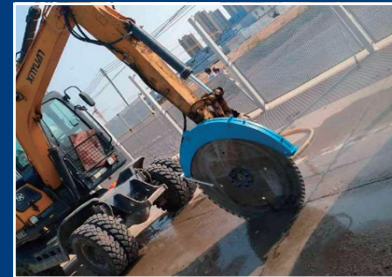
0800 MACWORKS

sales@macworks.nz

www.macworks.nz



MACWORKS
DRILLING AND MACHINE ATTACHMENTS



MACWORKS

DRILLING AND MACHINE ATTACHMENTS

0800 MACWORKS
0800 622 96757

sales@macworks.nz

www.macworks.nz

While efforts have been made to ensure accuracy, Macworks is not bound by accidental misdescriptions within this catalogue. Specifications are defined by core technical intent, not by typographical inconsistencies. If you have any questions, feel free to speak with a Macworks representative.