

# Rock Saw

Macworks Rock Saws have diamond tipped blades for demolition, cutting reinforced concrete, excavation of foundations, underground cable and trench cutting, rock waste reshaping and other operations. 360° Rotating guard for safety and protection. Our Rock Saws work in both directions and have an adjustable hydraulic brake system. Macworks rock saws install directly to your excavator.



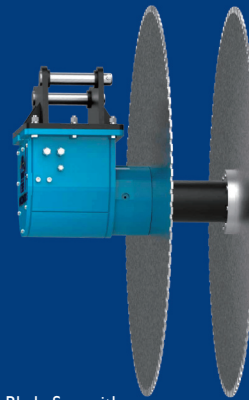
Single Blade Saw with forklift cradle.



Single Blade Saw with hydraulic rotation bracket.



Single Blade Saw with manual rotation bracket.



Twin Blade trenches from 20 to 500mm.



Triple Blades improve cut efficiency.



Offset extension for cutting outside the excavator track.



Concrete and Rock Cutting



Cut Copper Aluminium and Plastic



Wood cuts, reshaping and excavation



Cut through most Steel

Model	Excavator	Max Power Output	Max Flow.	Recommended Flow	Max Pressure	Output Torque	Output Shaft Speed	Weight	Saw Blade spec	Distance Between Blades	Applicable Materials
YS-05SS	5-10 ton	41kw	150 lpm	60-100 lpm	310 bar	600Nm@320 bar	0-600 rpm	250 kg	Ø 800-1400 mm	/	granite, basalt, marble, reinforced concrete
YS-10SS	8-16 ton	70 kw	180 lpm	100-150 lpm	310 bar	1450Nm@320 bar	0-600 rpm	350 kg	Ø 1400-2000 mm	/	granite, basalt, marble, reinforced concrete
YS-15SS	15-25 ton	120 kw	205 lpm	150-230 lpm	320 bar	2610Nm@320 bar	0-500 rpm	450 kg	Ø 1600-2200 mm	/	granite, basalt, marble, reinforced concrete
YS-20SS	20-45 ton	200 kw	380 lpm	200-300 lpm	320 bar	3200Nm@320 bar	0-450 rpm	750 kg	Ø 2200-3600 mm	/	granite, basalt, marble, reinforced concrete
YS-20DS	20-36 ton	90 kw	280 lpm	180-250 lpm	450 bar	7463Nm@320 bar	0-250 rpm	1300 kg	Ø 2200-3500x9.5 mm	1m*1.2m*1.4m	granite, basalt, marble, reinforced concrete
YS-30DS	30-45 ton	120 kw	300 lpm	180-300 lpm	450 bar	9850Nm@350 bar	0-250 rpm	1350 kg	Ø 2200-3500x9.5 mm	1m*1.2m*1.4m	granite, basalt, marble, reinforced concrete



**MACWORKS**  
DRILLING AND MACHINE ATTACHMENTS

**0800 MACWORKS**

[sales@macworks.nz](mailto:sales@macworks.nz)

[www.macworks.nz](http://www.macworks.nz)



Quarrying



Demolition



Tunneling



Excavation



Trenching



Forestry



Landscaping



Mining

# Crusher Buckets

Model	Excavator	Opening Dimensions	Speed/Min.	Pressure	Oil Flow	Output Setting	Load Capacity	Dimensions	Weight
YC - 10	6-15 ton	450x400 mm	320 rpm	200 bar	>100 l/min	10-100 mm	0.5m <sup>3</sup>	1340x756x813 mm	920 kgs
YC - 20	18-30 ton	650x510 mm	320 rpm	220 bar	>150 l/min	10-100 mm	0.8m <sup>3</sup>	1959x996x1193 mm	2100 kgs
YC - 30	25-40 ton	800x520 mm	320 rpm	250 bar	>200 l/min	12-120 mm	1.1m <sup>3</sup>	1959x1146x1218 mm	2750 kgs
YC - 40	30-60 ton	100x570 mm	300 rpm	250 bar	>300 l/min	12-120 mm	1.8m <sup>3</sup>	2628x1520x1480 mm	5100 kgs

Please note the maximum flow and pressure can not be met at the same time - please consult Macworks before use.



Crushing and recycling of construction waste such as concrete, bricks, asphalt concrete, ceramics, glass, etc.



Crushing of railway cement sleepers, cement poles, various bridge pier piles.



Pavement construction and earthwork, excavation engineering, forest road construction site crushing and processing of aggregates.



The processing of natural stone in quarries, mines, gravel pits, river pebble pits, etc. Sand making (using Macworks special fine-tooth jaws) to meet the needs of construction materials in areas lacking sand.



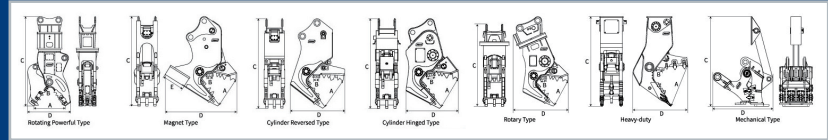
**MACWORKS**  
DRILLING AND MACHINE ATTACHMENTS

**0800 MACWORKS**

[sales@macworks.nz](mailto:sales@macworks.nz)

[www.macworks.nz](http://www.macworks.nz)

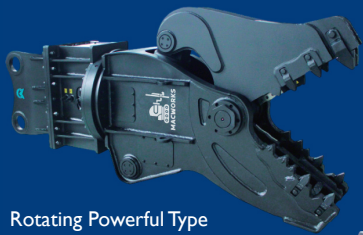
# Secondary Pulveriser



**Macworks Secondary Hydraulic Pulverisers** are specifically designed for demolition and recycling work. Best used to meet low noise and vibration requirements, jaws are made from **HARDOX** for extreme wear resistance with interchangeable teeth and blades. 360-degree rotation is available as an option on all models.

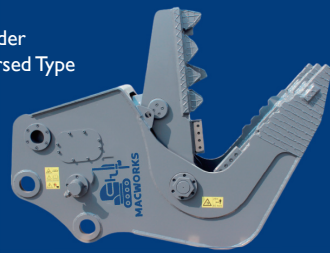
## Secondary Pulveriser Attachment Specifications

Pulveriser Type		Rotating Powerful Type		Magnet Type		Cylinder Reversed Type			Cylinder Hinged Type		Rotary Type		Heavy Duty	Mechanical Type	
Model	Unit	JSRP180	JSRP280	JSP220 IIM600	JSP230 IIM600	JSP80C	JSP230 IIC	JSP245C	JSP150D	JSP230D	JSP150X	JSP220X	JSHP280	JSMP200	JSMP300
Suitable Excavator	ton	12-18	20-30	20-24	26-30	6-9	26-30	-	9-16	20-30	12-18	20-30	20-35	20-28	30-38
Weight	kg	1300	2250	2000	2330	480	1750	2050	1000	1700	1200	1750	2050	1200	1500
Opening A	mm	610	765	800	830	500	830	1000	700	810	570	700	975	400	430
Blade Length B	mm	140	180	180	170	130	170	230	130	230	130	180	200	-	-
Length C	mm	2050	2300	2275	1891	1525	1891	2600	1829	2267	2000	2285	2322	1970	2110
Width D	mm	440	550	600	600	450	525	610	510	590	650	752	590	730	825
Crushing Force	ton	80	150	80	82	40	82	110	65	95	65	80	150	-	-
Working Pressure	bar	250	300	300	300	200	300	320	250	320	280	320	320	-	-
Working Flow	lpm	150	200	200	200	100	200	200	150	200	200	200	200	-	-
Outer Diameter E	mm	-	-	600	600	-	-	-	-	-	-	-	-	-	-
Rotating Motor Pressure	lpm	-	120	-	-	-	-	-	-	-	90	120	-	-	-
Rotating Motor Flow	mm	40-60	40-60	-	-	-	-	-	-	-	30-50	40-60	-	-	-

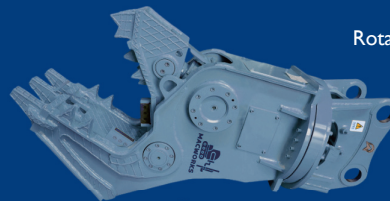


Rotating Powerful Type

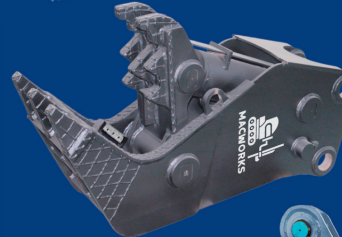
Cylinder Reversed Type



Rotary Type



Heavy Duty Type



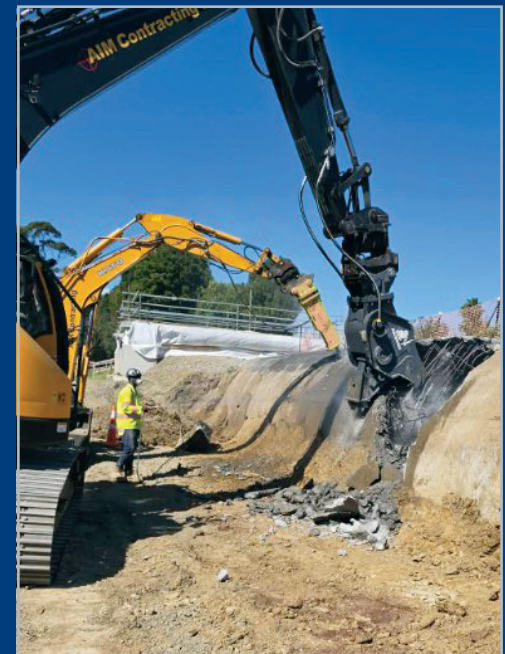
Magnet Type



Cylinder Hinged Type



Mechanical Type



**MACWORKS**  
DRILLING AND MACHINE ATTACHMENTS

**0800 MACWORKS**

[sales@macworks.nz](mailto:sales@macworks.nz)

[www.macworks.nz](http://www.macworks.nz)

# Primary Pulveriser/Concrete cutter

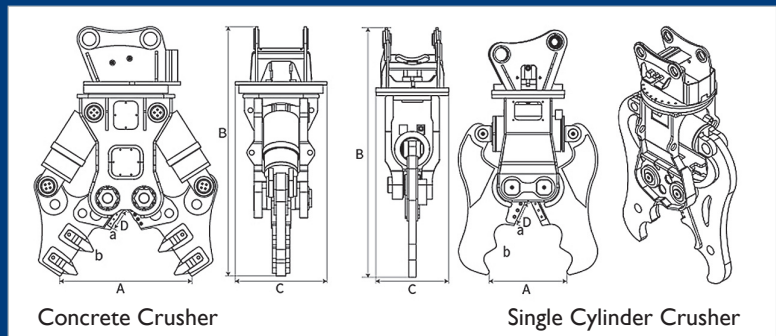
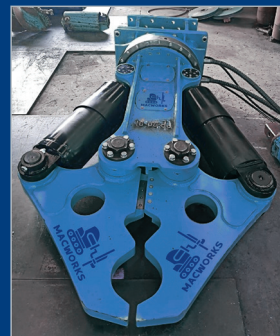
Concrete Cutter Attachment Specifications

Single Cylinder Cutter Attachment Specifications

Item/Model	Unit	JSDS80	JSDS80M	JSDS150	JSDS150M	JSDS200	JSDS200M	JSDS300	JSDS300M	JSMS20M	JSMS40M	JSMS80M	JSMS260	JSMS260M
Suitable Excavator	ton	6-9	6-9	12-18	12-18	20-28	20-28	30-38	30-38	1.5-2.5	3-5	6-9	20-30	20-30
Weight	kg	360	300	1000	950	1750	1700	2320	2250	135	220	380	2450	2400
Working Pressure	bar	250	250	280	280	300	300	300	300	180	200	260	320	320
Working Flow	lpm	120	120	200	200	250	250	250	250	30	40	100	350	350
Opening A	mm	390	390	570	570	820	820	900	900	290	350	420	1000	1000
Blade Length D	mm	100	100	150	150	180	180	180	180	100	100	120	160	160
Height B	mm	1280	1280	1756	1756	1980	1980	2120	2120	1000	1148	1385	2550	2550
Width C	mm	850	850	1146	1146	1400	1400	1500	1500	660	785	895	1510	1510
Crushing Force b	ton	20	20	80	80	100	100	120	120	20	22.5	50	132	132
Cutting Force a	ton	50	50	165	165	210	210	260	260	-	-	-	-	-
Rotation Diameter	mm	360	360	593	593	752	752	752	752	-	-	-	752	752

Note: M suffix designates Mechanical Rotation

Macworks pulverisers and concrete crushers are designed to multi-function in demolition and recycling work. Made from HARDOX steel for use on heavy industrial structure and toughened concrete construction, all crushers swivel 360-degrees and cylinders have speed valves to ensure fast cycle times



**MACWORKS**  
DRILLING AND MACHINE ATTACHMENTS

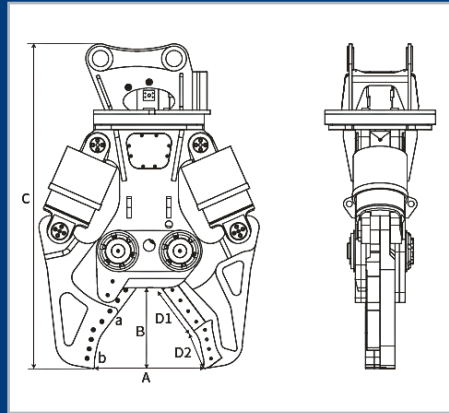
0800 MACWORKS

sales@macworks.nz

www.macworks.nz

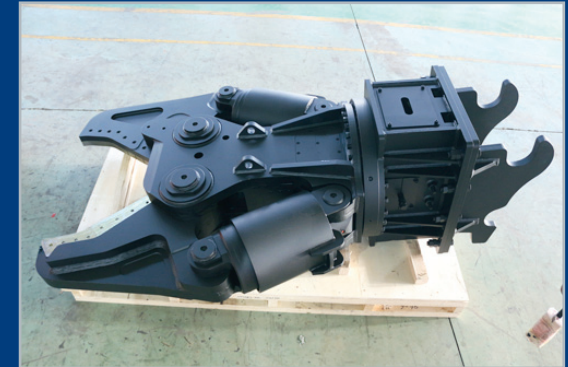
# Hydraulic Scrap Shear

Hydraulic Shear Attachment Specifications



Model	5T	12-18T	20-30T	30-40T
A (mm)	390	650	750	800
B (mm)	310	560	700	750
Without Top Bracket C (mm)	1330	1900	2200	3000
D (mm)	230	350	400	450
E (mm)	170	260	300	360
F (mm)	480	650	732	900
Weight Without Top Bracket (kgs)	500	1600	2600	3700
Cutting Force at front (ton)	30	70	100	125
Cutting Force at middle (ton)	52	105	148	200
Flow for rotation (l/min)	20-30	30-40	40-50	50-60
Pressure for rotation (MPa)	10-14	12-16	14-17	14-17
Flow for cylinder (l/min)	50-80	150-200	220-280	250-350
Pressure for Cylinder (MPa)	25	32	35	35

Macworks scrap shears are essential tools for processing large quantities of steel sections. Makes it much faster to cut scrap steel into smaller bits.



**MACWORKS**  
DRILLING AND MACHINE ATTACHMENTS

0800 MACWORKS

sales@macworks.nz

www.macworks.nz

# Hydraulic Eagle Shear

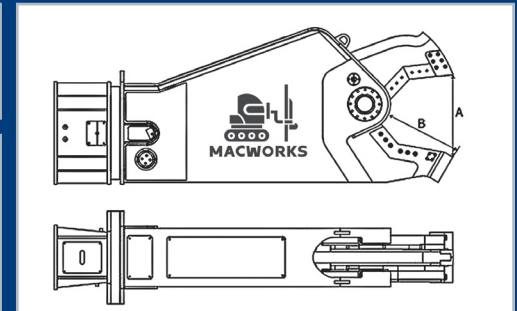
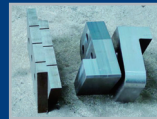
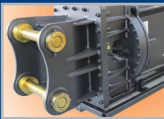
## Eagle Shear Attachment Specifications

Macworks Eagle Shear excavator attachments are suitable for scrap steel operations such as dismantling scrap cars, steel structure in factory buildings, cutting steel bars, materials, tanks, and pipes.

### Main features:

- 360° hydraulic rotation, increases efficiency
- Speed valve installed, reduces cycle time
- Easy to replace blades reduce machine downtime
- Wear resistant steel for maximum strength

Item/Model	Unit	JS40RT	JS80RT	JS150RT	JS280RT	JS380RT	JS400RT	JS450RT	JS500RT	JS800RT
Arm Installation	Ton	3-5	6-9	12-18	20-28	30-38	36-45	40-50	46-60	60-80
Boom Installation	Ton	-	-	-	-	20-38	26-45	30-50	36-60	50-80
Working Pressure	bar	200	200	250-300	280-320	300-320	320-350	320-350	320-350	320-350
Working Flow	lpm	80	100	150	180-220	200-250	200-250	200-300	250-300	300-360
Weight	kg	420	580	1350	2450	3800-4200	5600/5900	5600/5900	6500/6800	8500/8800
Rotating Flow	lpm	20	30	30-40	30-40	30-40	30-40	30-40	30-40	50-60
Rotating Pressure	bar	100	100	90-100	100-115	100-115	100-115	100-115	100-115	140-150
Opening A	mm	200	302	389	500	600	663	700	816	922
Cutting Depth B	mm	200	311	417	530	630	680	724	800	900
Full Length	mm	1450	1790	2100	3030	3450/4600	4400/5100	4550/5250	4600/5300	5000/5700
Rotation Diameter	mm	360	360	593	752	806	922	922	922	1022



**Rotating Group with Anti-cavitation Valve**  
Rotating group with anti-cavitation valve 360 continuous rotation. Always the best positioning of the shear.

**Robust Structure**  
The main structure is made of high-strength steel, and the jaw part is made of high performance wear resistant steel. The cylinder and core components are completely covered by the main body to prevent collision and accidental impact during operation.

**Spindle Central Pin Adjustment Kit**  
We have a unique central pivot pin layout. This allows for regular adjustment of the pin to ensure perfect shearing.

**New Piercing Tip & Double Guide**  
New Piercing Tip: Bolted blades on piercing tip for fast replacement. Eliminates time consuming rebuilding of the tip. Double Guide: Twin guide for the moveable jaw ensures perfect alignment.

**Frontal Blade**  
The front blade ensures accurate shearing with the tip and can be turned.

**Adjustable Blade**  
The blade adopts threaded hole design. If there is material jam, it can be quickly eliminated by adjusting the blade.

**Maintenance Space Designed**  
Facilitate the maintenance and repair of internal core components.

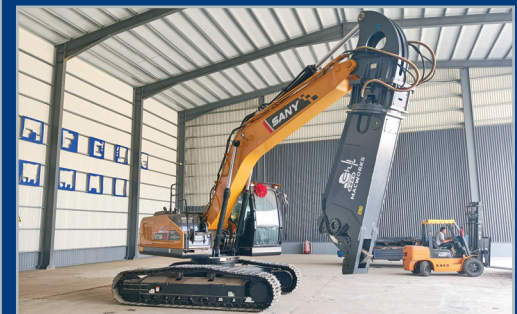
**Special Speed Valve**  
Reduced cycle times regenerating power when required. Protection for the shear eliminating pressure peaks.

**Special Design Cylinder**  
Increased cylinder size for 20% more power. Forged cylinder rod for a better functionality and security. Reversed cylinder installation for full rod protection.

**Double Guide**  
Twin guide for the moveable jaw ensures perfect alignment.

**Ball Joint**  
The movable cutter head and the oil cylinder are connected by a ball head which can prevent the parts from bearing eccentric torque and prolong the service life of the machine.

**Discharge Port**  
Aiming at optimised design to reduce material blockage.



0800 MACWORKS

sales@macworks.nz

www.macworks.nz



**MACWORKS**  
DRILLING AND MACHINE ATTACHMENTS

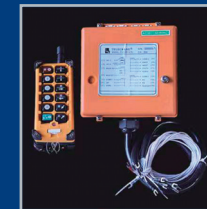
# Scrap Magnet

Magnet Attachment Specifications

Macworks lifting electromagnetic chuck, also known as a scrap magnet, is used to hold conductive materials and is suitable for handling cast iron ingots, steel balls and various scrap steels.



Model	Unit	REM-60L	REM-70L	REM-80L	REM-90L	REM-100L	REM-110L	REM-120L	REM-130L	REM-150L	REM-165L	REM-180L
Carrier Weight	T	2-4	3-5	5-8	10-12	12-15	15-18	18-20	20-25	25-35	30-35	/
Current	A	11	15	18	26.6	30.6	35	41	45	72	75	102
Power	Kw	2.3	5	6	8	9	10	12	14	17	18	24
Weight	Kg	400	500	700	900	1100	1300	1400	1600	2200	2800	3300
Lifting Capacity/Steel Ball	Kg	2000	2500	3000	4500	6500	6500	7500	8500	11000	12500	14500
Lifting Capacity/Steel Block	Kg	280/170	380/200	480/250	650/400	1000/800	1050/800	1300/100	1450/1100	1980/1500	2300/1800	2850/2200
Lifting Capacity/Iron Filings	Kg	280/100	380/200	480/250	650/400	1000/800	1050/800	1300/100	1450/1100	1980/1500	2300/1800	2850/2200



0800 MACWORKS

[sales@macworks.nz](mailto:sales@macworks.nz)

[www.macworks.nz](http://www.macworks.nz)

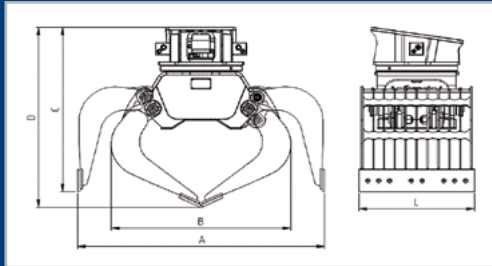


**MACWORKS**  
DRILLING AND MACHINE ATTACHMENTS

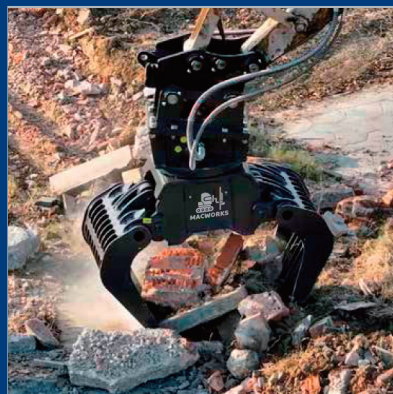
# Demolition Grabs

## Demolition and Sorting Grapple Specifications

- Flexible operation
- Parker hydraulic motor
- Hardox / NM400



Model	Unit	RCG-mini	RCG-01	RCG-02	RCG-04	RCG-06	RCG-08	RCG-10	RCG-14	RCG-17
Carrier Weight	Ton	1-2.5	2.5-4.5	4-6	6-10	10-15	16-22	23-26	27-30	31-37
Cylinder Max Working Pressure	Bar	250	250	300	350	350	350	350	350	350
Cylinder Working Oil Flow	L/min	6-13	8-15	10-20	15-30	30-65	40-80	55-110	55-110	95-165
Safety valve	/	N	N	N	N	Y	Y	Y	Y	Y
Motor Max Working Pressure	Bar	250	100	100	100	140	140	140	140	140
Motor Working Oil Flow	L/min	4-6	6-9	8-12	8-12	12-20	12-20	14-20	14-20	28-40
Rotation System	Tr/min	10/15	10/15	10/15	10/15	10/15	10/15	10/15	10/15	10/15
Force	N	10000	12000	19000	25000	40000	50000	60000	62000	93000
A	mm	750	1090	1180	1290	1710	1845	2000	2100	2270
B	mm	570	770	850	960	1245	1375	1440	1465	1630
C	mm	720	770	840	910	905	1000	1050	1190	1275
D	mm	730	760	850	930	1080	1100	1290	1375	1425
L	mm	330	400	460	550	800	900	1010	1130	1210
Volume	L	50	77	105	147	395	470	700	820	1080
Weight	Kg	115	210	260	370	745	950	1230	1500	2100
Weight with Frame Bracket	kg	122	238	310	433	900	1142	1443	1760	2848



0800 MACWORKS

[sales@macworks.nz](mailto:sales@macworks.nz)

[www.macworks.nz](http://www.macworks.nz)



**MACWORKS**  
DRILLING AND MACHINE ATTACHMENTS